

## Heavy Duty Single Sided Rotary Tableting Machine cGMP

- Robust with high quality Engineering
- Small batch production
- Safe/ Simple to operate and easy to maintain
- Designed as per cGMP standards



It is a square model/single sided rotary tablet press Machine / promising unmatched quality for small batch Production. safety / enhanced performance / cleanability and ease of operation is its most significant features.

## MACHINE CONSTRUCTION

### a). Compact Design

The design of machine is very compact for cleanability and ease of operation. This is noteworthy since the machine is capable of compressing approximately 50,400 tablet per hour.

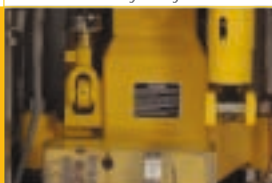
### b). Drive Configuration

The turret is driven by a precise phosphorus-bronze worm Fitted to a bearing mounted worm shaft which is driven by a "V" belt and variable speed pulley mounted on the motor shaft.

Compression Zone



Heavy Body



Overload Pressure Release System



Tablet Outlet



### c). Cam Track Design

The Machine incorporates the latest cam track design having smooth cam angles. Smooth cam angles improve punch Travel / which in turn / facilitate tablet ejection and reduce punch head wear extended through lubrication of the cam tracks.

### d). Cleanability

The tableting zone has been designed as per the stringent cGMP norms. The main features of the tableting zone include :

- ▣ Paint-free tableting area
- ▣ Easy and thorough cleaning possible since most fittings ▣ are detachable
- ▣ Dust traps reduced to a bare minimum
- ▣ Overall cross contamination and cleaning time greatly ▣ reduced

### e). Maintenance

Major controls and the one-shot lubrication system are easily accessed through the panel. Since there are no moving parts in this area these are not interlocked, therefore adjustments can be carried out safely while the machine is in operation.

### f). Lubrication

All major lubrication points are served by the one-shot lubrication system. Oil cups are provided wherever continuous lubrication is required.

### g). Overload and Pressure Release

Effectively, the safety valve of the machine, this is fitted to both the lower pressure rolls. The overload pressure release should always be set to relieve the pressure with minimum effort consistent with the diameter and hardness of the tablets being made. Adjustments are easily made from the lower cabinet. Serious damage to both the machine and the punches can be prevented through proper use and maintenance of this system.

### h). Motor Overload

Any appreciable motor overload that may occur due to tight punches etc. is indicated on an ammeter fitted to the control panel. The average amperage in normal running (tableting) condition is to be noted. Any increase in this average should be immediately investigated.

## TECHNICAL SPECIFICATIONS:

Type▣	CM-3-RY-16▣	CM-3-RY-20
Tooling▣	"D"▣	"D"
No. of Station▣	16 Stn.▣	20 Stn.
Operating Force▣	10 Ton▣	10 Ton
Max. Tablet Diameter▣ ▣ ▣	23 mm ▣ (25mm on Demand)▣	23 mm (25mm on Demand)
Max. Depth of fill▣	20 mm▣	20 mm
* Output Tablet / Hr.▣	14,400 to 40,300▣	18,000 to 50,400
Electric Motor▣	2 Hp / 960 RPM▣	2 Hp / 960 RPM

\* Depending upon the characteristics of material and shape & size of tablets.

**NOTE :** ▣ Due to continuous improvements in the machineries, specification of the machineries is ▣ subject to change without any prior notice.